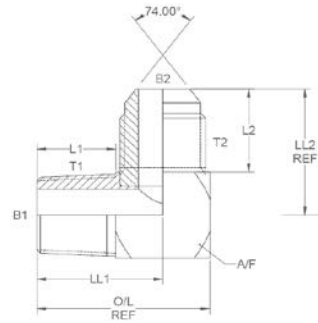


All dimensions are imperial unless stated.



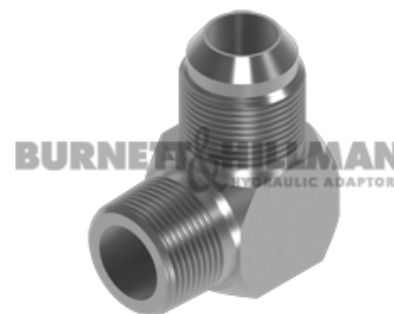
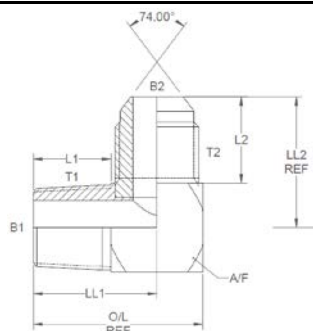
	T1	T2	B1	B2	L1	L2	O/L	LL1	LL2	A/F
08550	1/8	7/16	0.187	0.172	0.52	0.64	1.02	0.77	0.965	0.5
08551	1/8	1/2	0.187	0.234	0.52	0.64	1.16	0.832	0.965	0.625
08552	1/8	9/16	0.187	0.297	0.52	0.65	1.16	0.832	0.985	0.625
08553	1/4	7/16	0.25	0.172	0.6	0.64	1.275	0.937	0.952	0.625
08554	1/4	1/2	0.25	0.234	0.675	0.64	1.3	0.987	0.965	0.625
08555	1/4	9/16	0.25	0.297	0.675	0.65	1.3	0.987	0.985	0.625
08556	1/4	3/4	0.25	0.391	0.675	0.775	1.55	1.125	1.238	0.625
08557	3/8	7/16	0.375	0.172	0.69	0.64	1.465	1.077	1.015	0.75
08558	3/8	1/2	0.375	0.234	0.69	0.67	1.465	1.077	1.045	0.75
08559	3/8	9/16	0.375	0.297	0.69	0.7	1.465	1.077	1.075	0.75
08560	3/8	3/4	0.375	0.391	0.7	0.775	1.575	1.137	1.237	0.875
08561	3/8	7/8	0.375	0.484	0.7	0.875	1.7	1.2	1.4	1
08562	1/2	7/16	0.5	0.172	0.85	0.64	1.85	1.413	1.077	0.875
08563	1/2	1/2	0.5	0.234	0.85	0.67	1.85	1.413	1.107	0.875
08564	1/2	9/16	0.5	0.297	0.85	0.7	1.85	1.413	1.137	0.875
08565	1/2	3/4	0.5	0.391	0.85	0.85	1.85	1.413	1.287	0.875
08566	1/2	7/8	0.5	0.484	0.94	0.875	1.94	1.44	1.4	1
08567	1/2	1-1/16	0.5	0.609	0.94	0.99	2.065	1.502	1.602	1.125
08584	1/2	1-5/16	0	0	0	0	0	0	0	0
08568	3/4	9/16	0.687	0.297	0.97	0.7	2.21	1.532	1.262	1.125

DESIGN DETAILS AND SPECIFICATIONS SUBJECT TO CHANGE WITHOUT PRIOR NOTICE - Whilst every effort has been made to ensure the accuracy of the information supplied herein, Burnett & Hillman cannot be held responsible for any errors or omissions (E&OE)

BSPT male x JIC male 90° compact elbow

Oct-21
0612 IMP

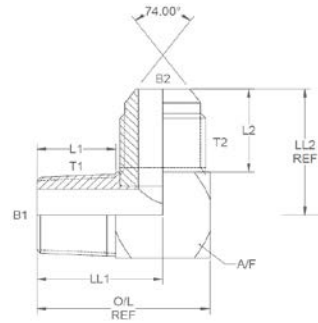
All dimensions are imperial unless stated.



	T1	T2	B1	B2	L1	L2	O/L	LL1	LL2	A/F
08569	3/4	3/4	0.687	0.391	0.97	0.85	2.21	1.532	1.412	1.125
08570	3/4	7/8	0.687	0.484	0.97	0.97	2.21	1.532	1.532	1.125
08571	3/4	1-1/16	0.687	0.609	0.97	1.05	2.21	1.532	1.612	1.125
08572	3/4	1-5/16	0.687	0.844	0.945	1.125	2.32	1.632	1.825	1.375
08573	1	3/4	0.875	0.391	1.25	0.85	2.75	2.063	1.537	1.375
08585	1	7/8	0.875	0.484	1.25	0.95	2.75	2.063	1.637	1.375
08574	1	1-1/16	0.875	0.609	1.25	1.05	2.75	2.063	1.737	1.375
08575	1	1-5/16	0.875	0.844	1.25	1.22	2.75	2.063	1.907	1.375
08576	1	1-5/8	0.875	1.078	1.3	1.2	3.05	2.175	2.1	1.75
08577	1-1/4	1-5/16	1.203	0.844	1.5	1.22	3.3	2.425	2.095	1.75
08578	1-1/4	1-5/8	1.203	1.078	1.5	1.23	3.3	2.425	2.105	1.75
08579	1-1/4	1-7/8	1.203	1.312	1.63	1.24	3.63	2.63	2.302	2
08580	1-1/2	1-5/8	1.312	1.078	1.6	1.23	3.65	2.625	2.23	2
08581	1-1/2	1-7/8	1.312	1.312	1.6	1.33	3.65	2.625	2.33	2
08582	2	2-1/2	1.812	1.781	1.7	1.865	4.45	3.2	3.115	2.5

DESIGN DETAILS AND SPECIFICATIONS SUBJECT TO CHANGE WITHOUT PRIOR NOTICE - Whilst every effort has been made to ensure the accuracy of the information supplied herein, Burnett & Hillman cannot be held responsible for any errors or omissions (E&OE)

A/F dimensions are imperial unless stated.



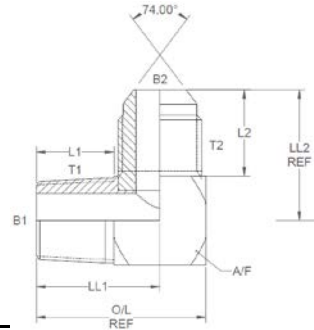
	T1	T2	B1	B2	L1	L2	O/L	LL1	LL2	A/F
08550	1/8	7/16	4.75	4.37	13.21	16.26	25.91	19.56	24.51	0.5
08551	1/8	1/2	4.75	5.94	13.21	16.26	29.46	21.13	24.51	0.625
08552	1/8	9/16	4.75	7.54	13.21	16.51	29.46	21.13	25.02	0.625
08553	1/4	7/16	6.35	4.37	15.24	16.26	32.39	23.8	24.18	0.625
08554	1/4	1/2	6.35	5.94	17.15	16.26	33.02	25.07	24.51	0.625
08555	1/4	9/16	6.35	7.54	17.15	16.51	33.02	25.07	25.02	0.625
08556	1/4	3/4	6.35	9.93	17.15	19.69	39.37	28.58	31.45	0.625
08557	3/8	7/16	9.53	4.37	17.53	16.26	37.21	27.36	25.78	0.75
08558	3/8	1/2	9.53	5.94	17.53	17.02	37.21	27.36	26.54	0.75
08559	3/8	9/16	9.53	7.54	17.53	17.78	37.21	27.36	27.31	0.75
08560	3/8	3/4	9.53	9.93	17.78	19.69	40.01	28.88	31.42	0.875
08561	3/8	7/8	9.53	12.29	17.78	22.23	43.18	30.48	35.56	1
08562	1/2	7/16	12.7	4.37	21.59	16.26	46.99	35.89	27.36	0.875
08563	1/2	1/2	12.7	5.94	21.59	17.02	46.99	35.89	28.12	0.875
08564	1/2	9/16	12.7	7.54	21.59	17.78	46.99	35.89	28.88	0.875
08565	1/2	3/4	12.7	9.93	21.59	21.59	46.99	35.89	32.69	0.875
08566	1/2	7/8	12.7	12.29	23.88	22.23	49.28	36.58	35.56	1
08567	1/2	1-1/16	12.7	15.47	23.88	25.15	52.45	38.15	40.69	1.125
08584	1/2	1-5/16	0	0	0	0	0	0	0	0
08568	3/4	9/16	17.45	7.54	24.64	17.78	56.13	38.91	32.05	1.125

DESIGN DETAILS AND SPECIFICATIONS SUBJECT TO CHANGE WITHOUT PRIOR NOTICE - Whilst every effort has been made to ensure the accuracy of the information supplied herein, Burnett & Hillman cannot be held responsible for any errors or omissions (E&OE)

BSPT male x JIC male 90° compact elbow

Oct-21
0612 METRIC

A/F dimensions are imperial unless stated.



	T1	T2	B1	B2	L1	L2	O/L	LL1	LL2	A/F
08569	3/4	3/4	17.45	9.93	24.64	21.59	56.13	38.91	35.86	1.125
08570	3/4	7/8	17.45	12.29	24.64	24.64	56.13	38.91	38.91	1.125
08571	3/4	1-1/16	17.45	15.47	24.64	26.67	56.13	38.91	40.94	1.125
08572	3/4	1-5/16	17.45	21.44	24	28.58	58.93	41.45	46.36	1.375
08573	1	3/4	22.23	9.93	31.75	21.59	69.85	52.4	39.04	1.375
08585	1	7/8	22.23	12.29	31.75	24.13	69.85	52.4	41.58	1.375
08574	1	1-1/16	22.23	15.47	31.75	26.67	69.85	52.4	44.12	1.375
08575	1	1-5/16	22.23	21.44	31.75	30.99	69.85	52.4	48.44	1.375
08576	1	1-5/8	22.23	27.38	33.02	30.48	77.47	55.25	53.34	1.75
08577	1-1/4	1-5/16	30.56	21.44	38.1	30.99	83.82	61.6	53.21	1.75
08578	1-1/4	1-5/8	30.56	27.38	38.1	31.24	83.82	61.6	53.47	1.75
08579	1-1/4	1-7/8	30.56	33.32	41.4	31.5	92.2	66.8	58.47	2
08580	1-1/2	1-5/8	33.32	27.38	40.64	31.24	92.71	66.68	56.64	2
08581	1-1/2	1-7/8	33.32	33.32	40.64	33.78	92.71	66.68	59.18	2
08582	2	2-1/2	46.02	45.24	43.18	47.37	113.03	81.28	79.12	2.5

DESIGN DETAILS AND SPECIFICATIONS SUBJECT TO CHANGE WITHOUT PRIOR NOTICE - Whilst every effort has been made to ensure the accuracy of the information supplied herein, Burnett & Hillman cannot be held responsible for any errors or omissions (E&OE)